

DINFIR3

Fire-rated lock
with double throws



TECHNICAL CHARACTERISTICS

- Galvanised steel lock casing and cover
- Nickel-plated sintered steel latch
- Nickel-plated zamak bolt
- Sintered steel 9 mm handle hole with 23° rotation
- 20 mm bolt, 2 turns (10+10 mm)
- Lock casing closed on every side
- Compatible with Euro profile cylinder, with DIN cam

PRODUCT

Lock complying with standard DIN 18251 for firebreak doors.

OPERATION

Internal / external:

- The key operates the bolt and retracts the latch
- The handle retracts the latch

DINFIR3

Fire-rated lock
with double throws



RANGE

- Lock with latch and bolt, series code 2D1*
- Centre distance 72 mm
- Casing size 55, 60, 65, 80, 100 mm
- Front panel with rounded edge (square edge option)
- Front panel 24x3 mm (20x3 mm option)
- Galvanised steel front panel (other options: in stainless steel)
- RH or LH, according to standard DIN 107

HIGHLIGHTS

- Lock complying with DIN 18251
- The lock casing and cover overlap in the 3 points of union with the front plate, making the lock extremely solid, especially when pushed from the side (break-in attempt)
- The front panel can be unscrewed for replacement or a change of finish
- Modularity of the range: if the front panel is changed (unscrewed) to the opposite hand and the latch is reversed, the lock hand changes too

COMPATIBLE ACCESSORIES

- Flush Bolt counter-lock series 2D6*, with manual lever, for opening/closing the semi-fixed leaf of a 2-leaf door
- Flat counter plates 24x3 mm (option 20x3 mm)
- Galvanised steel counter plates (other options: in stainless steel)
- Handles for firebreak doors series 0324*, 0325*
- Front panels for possible changes of finish (to be screwed on)

STANDARDS

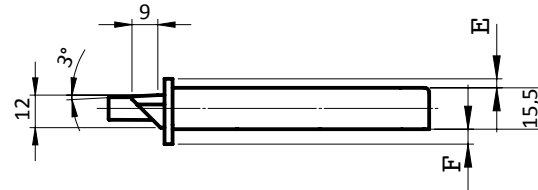
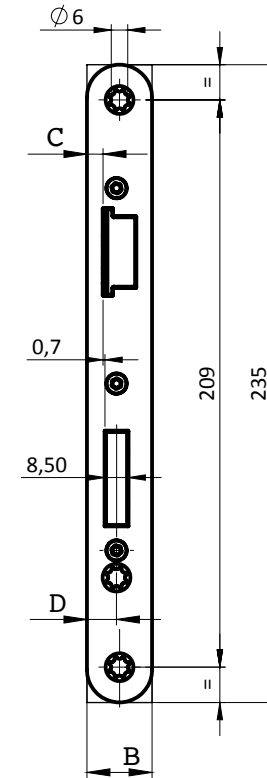
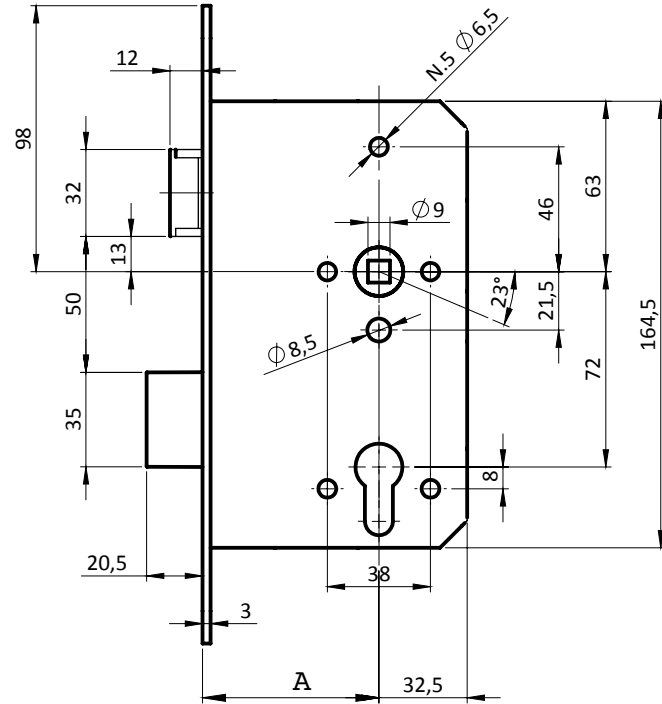
DIN 18251:2020-04
DIN 107:1974-04
EN 12209:2003/AC:2005

TEXT FOR SPECIFICATIONS

Lock with latch and bolt complying with standard DIN 18251:2020-04 for firebreak doors, series code 2D1* of the DINFIR3 range, with casing and cover overlapping in the 3 points of union with the front panel, making it extremely solid, especially when pushed from the side (break-in attempt).

DINFIR3

Fire-rated lock
with double throws



A	B	C	D	E	F
55 - 60 - 65 - 80 - 100	20	3.45	8.4	0.8	4
	24	5.95	10.9	3.3	5.5