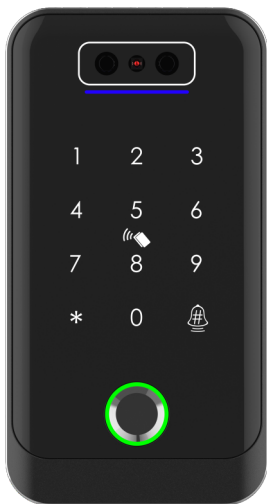


USER MANUAL- ACCESS CONTROLLER



Scan the QR code below to download the APP



GET IT ON
Google Play



Download on the
App Store

Search Google Play or APPLE Store with TTLock



Fingerprint



APP



I C Card



Passcode



Face
recognition

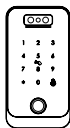
Smart your life!

AC04 ACCESS CONTROLLER

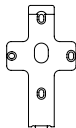
1 Product Introduction

Model	S4A-AC04
Dimensions	W78×H148×T21
Material	Aluminum Frame/Tempered Glass Panel
Unlock Way	IC Card,Passcode,Fingerprint,App,Face recognition
Support OS	iOS 7.0 or above, Android 4.4 or above
Power Supply	DC 12V
Communication	Bluetooth4. 1
Static Current	≈15mA
Dynamic Current	≈1A
Unlock Time	1-1.5 seconds
Working Temperature	-20~+70degree
Working humidity	10%~95%
Factory Password	123456 (after setting administrator, the password would be invalid)
Card Capacity	1000
Fingerprint Capacity	100
Face Capacity	100
Password Capacity	250 custom passwords, unlimited permanent passwords

2 Accessories



■ Access Controller×1



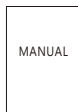
■ Mounting Plate×1



■ Screw×4



■ Plastic Wall Anchor×4

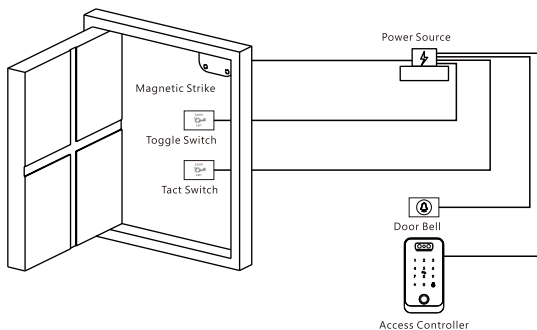


■ Manual×1



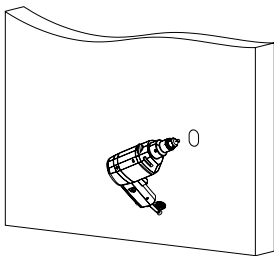
■ Hex Screwdriver×1

3 Illustration



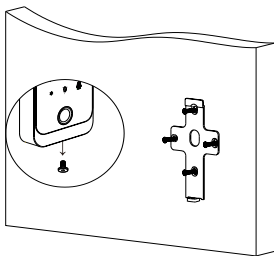
1 Drill a hole for the cable

Drill a hole at appropriate position to
Make space for the cable to connect
To the power source.



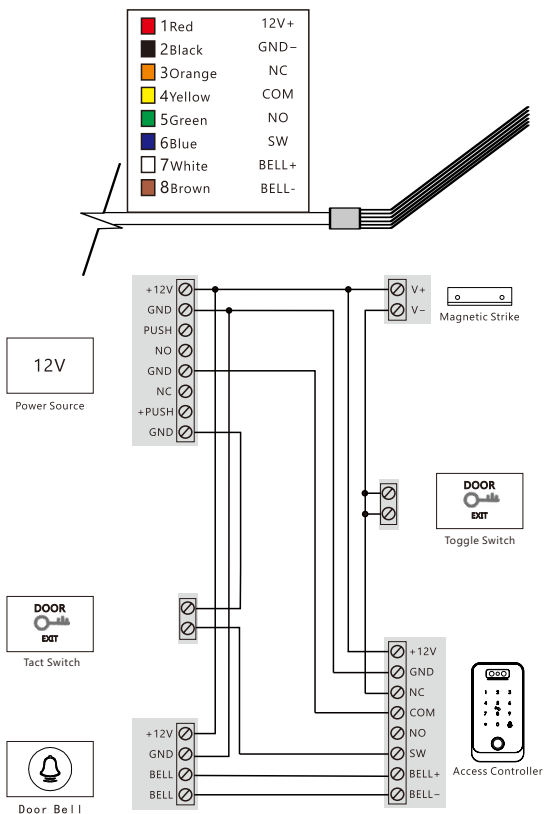
2 Install the mounting plate

Remove the mounting plate from the access
controller and fix it on the wall with 4 screws.



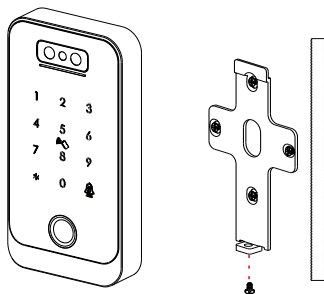
3 Wiring

Please connect the cables according to below instruction .



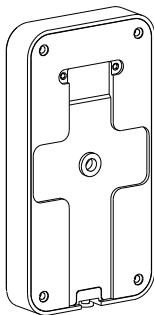
4 Install the access controller

Fit the access controller into the hook and fix it on the mounting plate with a screw in the bottom.

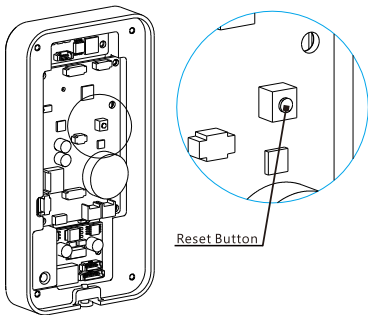


4 Reset to default mode

- 1 Open the rear cover of access control



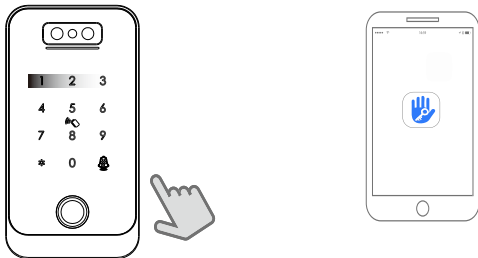
- 2 Find the reset button on the main board



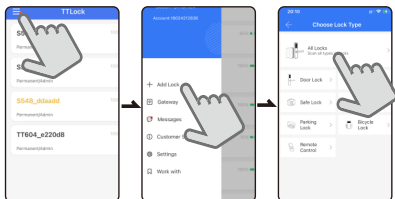
- 3 After the access control is powered on: Long press the reset button to hear "please input initialization pass-code" enter: **000#**, with sound: "Successful". Then the lock is under factory state, the default master password is: **123456 with # to confirm**, you can open the door with any fingerprint.

5 Pair the access controller with app

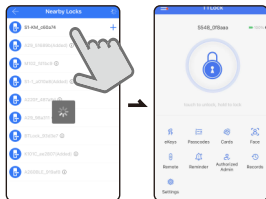
- 1 Tap the panel to light it up and activate the lock.
- 2 Activate the app.



- 3 Tap the " " icon on the upper left corner, tap "+add lock", select "Door lock".



- 4 Tap the device shown on the screen. Wait a few seconds, and add successfully.



- Notice: If fails, please shut off the App and Blue tooth ,turn them on try the above process again.